



Fun • Modern • Affordable
www.theguitarclub.net

One Direction - UK



Level Easy - Medium
Style Rock Pop
Speed 130bpm Moderate

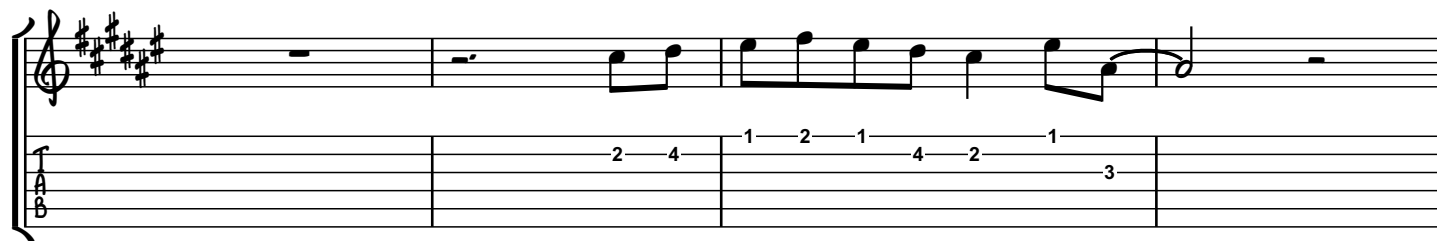
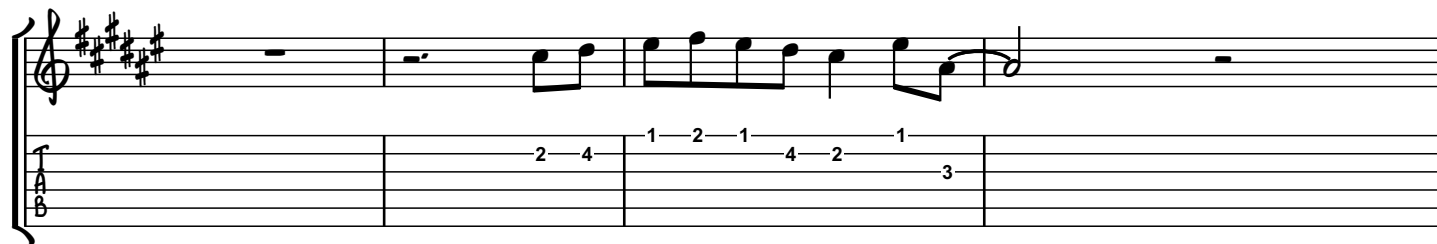
Capo: None

Released: 25th Nov 2007
You & I
by One Direction

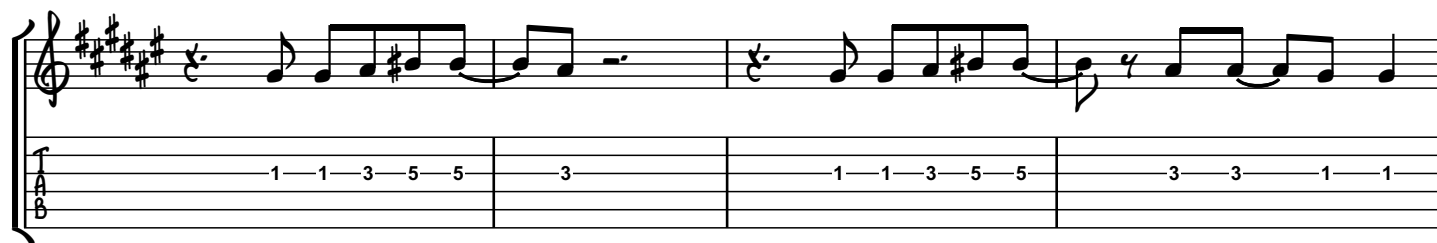
Written by
Scott, Bunetta, Ryan,
Tomlinson & Payne

MELODY VERSION

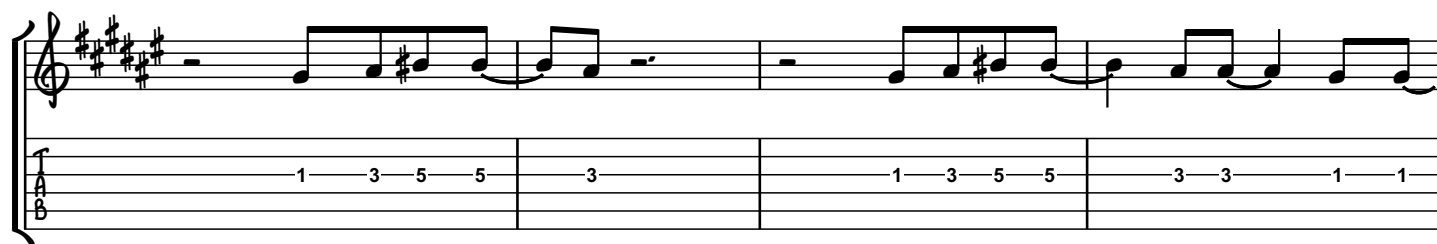
Intro



Verse



I figured it out_____ I figured it out_____ from black and white.



Seconds and hours_____ Maybe they had_____ to take some time.

Released: 25th Nov 2007

Level Easy - Medium
 Style Rock Pop
 Speed 130bpm Moderate

Capo: None

You & I

by One Direction

Written by
 Scott, Bunetta, Ryan,
 Tomlinson & Payne

MELODY VERSION

Verse continued...

I know how it goes I know how it goes from wrong and right.

Silence and sound Did they ever hold each other

Pre Chorus

Tight like us? Did they ever fight like us?

Chorus

You & I We don't wanna be like them.

We can make it to the end nothing can come between

Released: 25th Nov 2007

Level Easy - Medium
 Style Rock Pop
 Speed 130bpm Moderate

Capo: **None**

You & I

by **One Direction**

Written by
 Scott, Bunetta, Ryan,
 Tomlinson & Payne

MELODY VERSION

Chorus continued...

The first line of the chorus melody is written in treble clef with a key signature of four sharps (F#, C#, G#, D#). The melody consists of eighth and quarter notes. The guitar tab below it is for a guitar with a capo at the first fret, showing fret numbers 2, 4, (6), 6, 6, 6, 6, 4, 6, 6, (3), and 6.

You & I Not even the gods above Can

The second line of the chorus melody continues with eighth and quarter notes. The guitar tab shows fret numbers 6, 6, 6, 6, 4, 2, 2, (4), 2, 2, 1, 2, 2, 1, 2, (1), 2, 4, (6), and 6.

separate the two of us. No nothing can come between You & I

The third line of the chorus melody continues with eighth and quarter notes. The guitar tab shows fret numbers 2, 4, 1, 2, 1, 4, 2, 1, 3, 6, (4), (2), 6, (4), 4, and 2.

Oh You & I.

The fourth line of the chorus melody continues with eighth and quarter notes. The guitar tab shows fret numbers 2, 4, 1, 2, 1, 4, 2, 1, and 3.