

# 云宫迅音终极版

难度等级：11

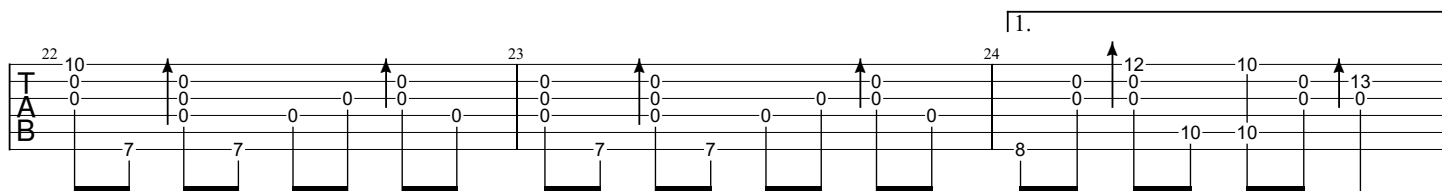
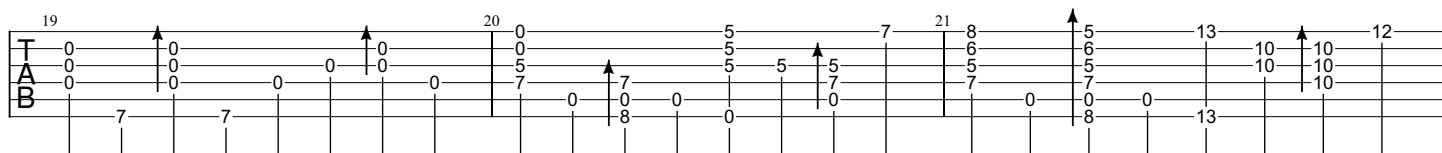
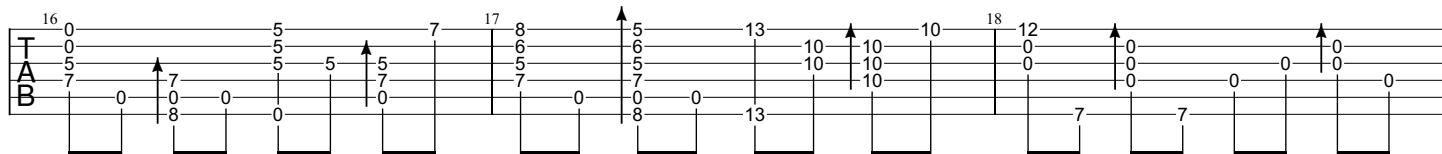
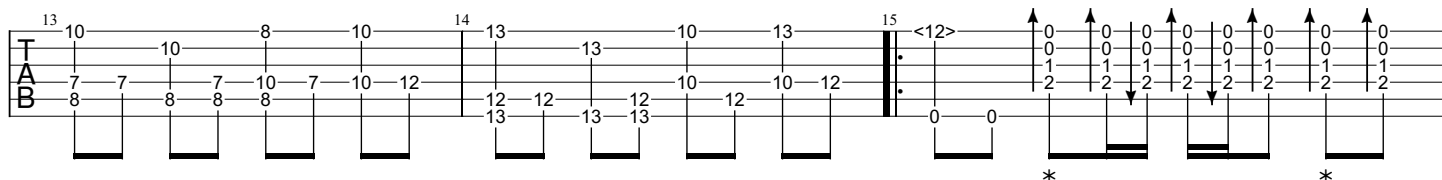
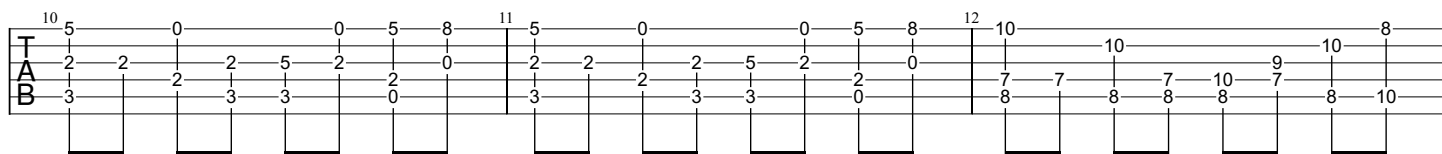
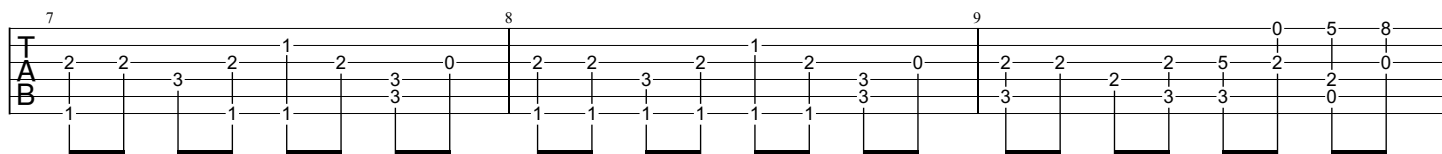
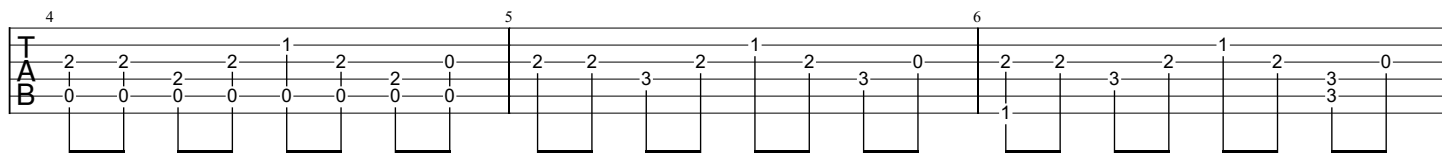
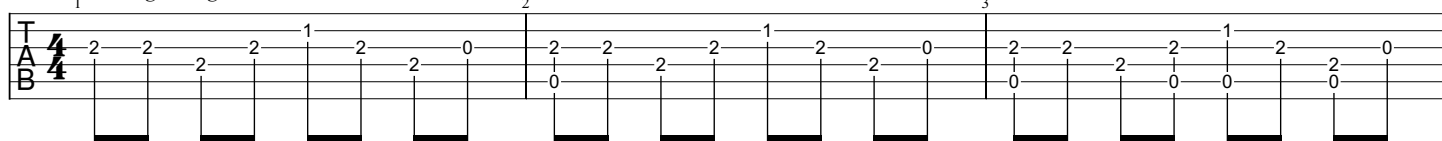
魔方吉他

Standard tuning

$\text{♩} = 120$

1 *let ring throughout*

n.g...



25 12 0 0 0 0 0 0 26 10 12 10 10 10 27 10 10 10 10 10 0

TAB 7 7 9 7 7 0 0 0 0 0 0 0 0 0 0 0 0

28 13 12 29 15 13 30 2 2 3 0 0 3 0

TAB 14 0 0 0 0 15 14 0 0 0 0 0 0 0 0 0 0

2.

31 1 2 1 0 3 32 3 0 0 0 0 0 33 0 0 0 0 0 0

TAB 0 0 3 0 1 0 3 0 2 2 0 2 2 0 2 2 2 2 0 2 0 2 0 2

34 2 2 0 35 1 1 0 36 5 2 2 2 2 2 2 2 2 2 2 2 2

TAB 0 0 3 0 0 0 3 0 0 0 3 0 1 0 3 0 4 4 2 4 2 4 2 4

37 2 2 2 38 4 2 5 3 39 2 4 4 4 4 2 2 2 2 2 2

TAB 4 4 2 4 2 4 2 4 4 2 2 2 2 2 2 2 2 2 2 2 2 2 2 2

40 0 0 3 2 41 0 2 2 42 2 3 2 5 2 2 2 2 2 2 2 2

TAB 0 0 0 0 0 0 0 0 0 0 0 0 0 0 0 0 4 4 4 4 4 4 4 4

43 5 3 44 2 5 45 2 2 2 2 2 2 2 2 2 2 2 2 2 2

TAB 4 4 4 4 4 4 4 4 2 2 2 2 2 2 2 2 2 2 2 2 2 2 2 2

1.

46 2 47 7 7 9 48 10 7 15 0 12

TAB 2 2 2 2 2 2 2 2 7 7 7 7 7 7 7 7 7 7 10 10 0 0

2.

49 14 11 11 11 11 50 11 11 9 51 7 7 7 7 7 9

TAB 9 9 X 9 9 X 9 9 9 9 9 7 7 7 7 7 7 9

