

花火-ROOM193 Ver.

井草聖二&黒田晃年

Open Dsus4 Standard tuning

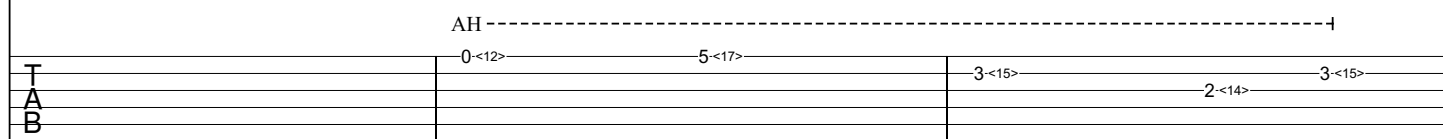
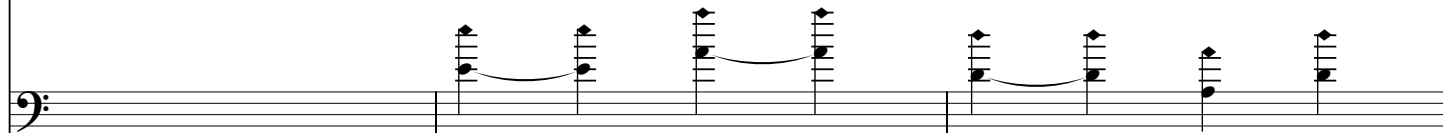
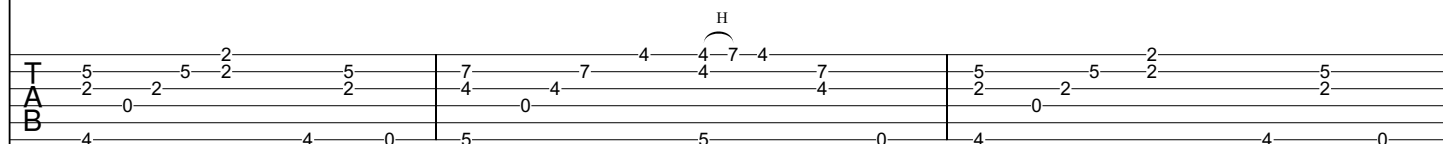
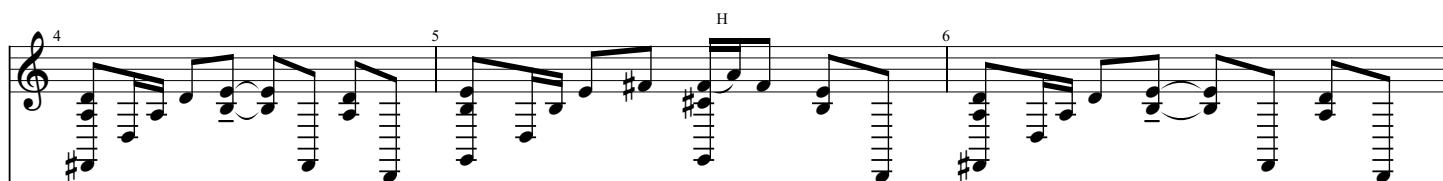
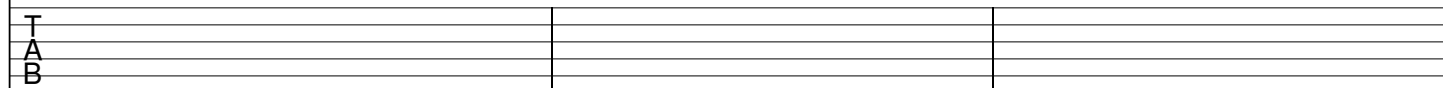
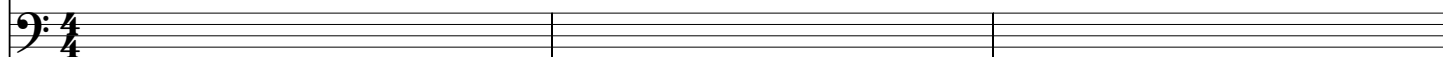
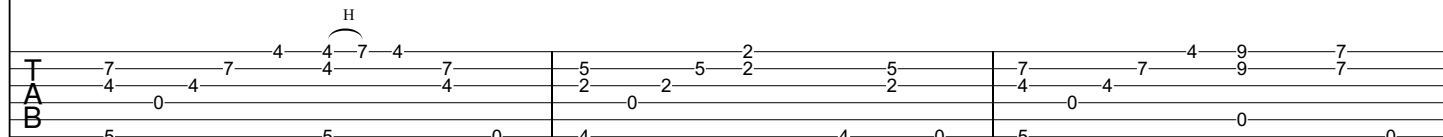
① = D

② = A

⑥ = D

♩ = 56

s.guit.



7 $\text{♩} = 135$

8 9

TAB

7 4 7 4 7 9 12 12 0 0

5 0 0 0

AH

0<12> 5<17> 3<15>

10 11 12

TAB

7-0 5-0 4-0 5-0 7-0 9-0 7-0 9-0 9-0 7-0 9-0 5-0 4-0 2-0 4-0

7-0 5-0 4-0 5-0 7-0 9-0 7-0 9-0 9-0 7-0 9-0 5-0 4-0 2-0 4-0

9 5 7

13 14 15

TAB

9-0 7-0 9-0 7-0 7-0 7-0 5-0 4-0 5-0 7-0 9-0 7-0 9-0 9-0 7-0

9-0 7-0 9-0 7-0 7-0 7-0 5-0 4-0 5-0 7-0 9-0 7-0 9-0 9-0 7-0

5 9 5

16 17 18

T P T P T P T P T P T P T P T P T P T P T P T P

9-0 5-0 4-0 2-0 4-0 9-0 7-0 9-0 7-0 7-0 5-0 4-0 5-0 7-0

9-0 5-0 4-0 2-0 4-0 5 4 4 4 4 7-0 7-0 5-0 4-0 5-0 7-0

7

full 1/2

5 4 3 5 3 3 4 2 4 3 5

T A B

19 20 21

T P T P T P T P T P T P T P T P T P T P T P T P

9-0 7-0 9-0 9-0 7-0 9-0 5-0 4-0 2-0 4-0 9-0 7-0 9-0 7-0

9-0 4-0 4-0 4-0 4-0 9-0 5-0 4-0 2-0 4-0 5 4 4 4 4 7-0

5 7

sl. sl. 1/2

7 5 5 7-8 5 5 8-7 8 7 5-3 5-7 7-5 X-5 7

T A B

22 T P T P T P T P 23 T P T P T P T P 24 T P T P T P T P

T 7-0 5-0 4-0 5-0 7-0 9-0 7-0 9-0 9-0 7-0 9-0 5-0 4-0 2-0 4-0

A 7-0 5-0 4-0 5-0 7-0 9-0 7-0 9-0 9-0 7-0 9-0 5-0 4-0 2-0 4-0

B 9 9 9 9 9 5 7

7 4 4 2 2 0 0 0 2 4 3 5 5 5 3 2 2 4 2

7 4 4 2 2 0 0 0 2 4 3 5 5 5 3 2 2 4 2

25 T P T P T sl. P T 26 T P T P 27 T T P

T 9-0 7-0 7-9-0 0<12>X-X 4 4 7 0 9-0 7-0 4 4 T 7-12-7 S

A 9-0 7-0 7-9-0 0<12>X-X 4 4 7 0 9-0 7-0 4 4 T 7-12-7 S

B 5 4 4 7 9 0 4 0 0 0 5 4 2 2 0 0 5 0

sl. * * * *

sl. X-X 5-7 7 5 X-X 5 X-X X X X X X X X X X X

X-X 2-4 4 2 X-X 2 X-X

28 T P T P 29 T P T P 30 T P T P

T 4 4 7 0 9-0 7-0 4 4 0 0 0 0 0 X X X 4 4 7 0 9-0 7-0

A 4 4 7 0 9-0 7-0 4 4 0 0 0 0 0 X X X 4 4 7 0 9-0 7-0

B 0 0 0 0 9-0 7-0 4 0 0 0 0 0 0 0 0 0 5 0 0 0

5 4 7 7 7 7 7 7 7 7 5

* * * *

X X X X X X X X X X X X X X X X

43 44 45

T P T P T P T P T P T P T P T P T P T P T P T P

T A B

9-0 7-0 9-0 9-0 7-0 9-0 5-0 4-0 2-0 4-0 9-0 7-0 9-0 7-0 7-0

5 7

P

10 10 7-5-7 5 full 5 7 8 5 3 2 0 3-0 4-2 2-0 2-4 2-4 2-0 2-4 3-5

sl. sl. H H

46 47 48

T P T P T P T P T P T P T P T P T P T P T P T P

T A B

7-0 5-0 4-0 5-0 7-0 9-0 7-0 9-0 9-0 7-0 9-0 5-0 4-0 2-0 4-0 9-0 7-0 9-0 5-0 4-0 2-0 4-0 9-0 7-0 9-0 5-0 4-0 2-0 4-0

9 5 7

full 1/2 full

3 3 5 5 9 10 12 10 9 12 10 5 4 3 0 2 5 3 5 2 2-4

X

58 H P 59 60 H P

S H P S S S H P S S

TAB 4 5 X-X X-7-9 7 X 9-7 5 7 2 4 X-X 2 X-X X-7-9 7 9-7 9 7

7\ 4\ 7\ 7\ 2 0 X-X 0-2 0-2-4 2-4 3 9\ 5-7 7\ 7\

sl.

H

61 62 H P 63

S H P S S * * *

TAB 0 0 0 4 4 4 4-X X-X 0 0 0 4 4 4 4-X X-X 2 2 2 2 2 2-X X-X 4 4 4 0 X 0 0 0 0 4 5 X-X X-7-9 7 X 9-7 5 7 2 4 XX

10 5 7 sl. 5 5 2 2 0 7\ 4\ 7\ 7\ 7-X 5-7 12-11-10-9-7 10 6-7-6-4-2 3-4 2

sl.

4:1

70 71 72

Measure 70: Treble staff has a half note G#4, a quarter note A4, and a quarter note G#4. Bass staff has a half note G#2, a quarter note A2, and a quarter note G#2. TAB for Treble: 5 2 2 | 5 2 5 2 | 5. TAB for Bass: 4 4 0 | 5 5 0 | 4 4 0.

Measure 71: Treble staff has a half note A4, a quarter note B4, and a quarter note A4. Bass staff has a half note A2, a quarter note B2, and a quarter note A2. TAB for Treble: 7 4 4 | 7 4 7 4 | 7 4 7 4. TAB for Bass: 5 5 0 | 5 5 0 | 5 5 0.

Measure 72: Treble staff has a half note B4, a quarter note C5, and a quarter note B4. Bass staff has a half note B2, a quarter note C3, and a quarter note B2. TAB for Treble: 5 2 2 | 5 2 5 2 | 5. TAB for Bass: 4 4 0 | 4 4 0 | 4 4 0.

73 74 75

Measure 73: Treble staff has a half note C5, a quarter note D5, and a quarter note C5. Bass staff has a half note C3, a quarter note D3, and a quarter note C3. TAB for Treble: 7 4 4 | 7 4 7 4 | 7 4 7 4. TAB for Bass: 5 5 0 | 5 5 0 | 5 5 0.

Measure 74: Treble staff has a half note D5, a quarter note E5, and a quarter note D5. Bass staff has a half note D3, a quarter note E3, and a quarter note D3. TAB for Treble: 7 4 4 | 7 4 7 4 | 7 4 7 4. TAB for Bass: 5 5 0 | 5 5 0 | 5 5 0.

Measure 75: Treble staff has a half note E5, a quarter note F#5, and a quarter note E5. Bass staff has a half note E3, a quarter note F#3, and a quarter note E3. TAB for Treble: 7 4 4 | 7 4 7 4 | 7 4 7 4. TAB for Bass: 5 5 0 | 5 5 0 | 5 5 0.

103 H P 104 105 H P

S H P S S S H P S S

T 0 0 0 4 4 4 4 X X X
A 0 0 0 4 4 4 4 X X X
B 2 2 2 2 2 2 X X X

2 X X X 7 9 7 9 7 4 5 X X X 7 9 7 5 7

2 X X X 7 9 7 9 7 0 0 0

sl. * * sl. * *

sl. let ring sl.

T 9\ 3 4 2 4 3 4 2 <7> X-X-10/12
A 7\ 3 4 2 4 2 <7> <7> X-X
B 7\ 7\ 7\ 7\

106 107 H P 108

S H P S S

T 0 0 0 7 7 7 7 X X X
A 0 0 0 7 7 7 7 X X X
B 2 2 2 7 7 7 7 X X X

4 2 X X X 7 9 7 9 7 9 7 0 0 0

2 X X X 7 9 7 9 7 0 0 0

sl. sl. sl. sl. sl.

sl. sl. sl.

T X-X-5/7-X-X X-X-10/12-X-X 3-5 9\ 8\7 5\3 4-2 2 4\2-0 /12\
A X-X-2/4-X-X X-X 2-4 7\ 7\ 7\ 4-2 4 4\2-0
B X-X-2/4-X-X 7\9-X-X-2-4 7\ 7\ 7\ 7\

① 3

109 110 111

let ring
①

TAB

5 5 0 4 4 0

3 12\ 3 2

112 113 114

TAB

5 0 4 5 0 5 0 5 0

3 2 3 0 5 5 2 7 3

115 116 117

Tablature for measures 115-117:

Measure 115: T (5, 2, 2), B (4, 4, 0)

Measure 116: T (5, 2, 5, 2, 5), B (6, 6, 0)

Measure 117: T (7, 4, 7, 4, 7, 4), B (5, 5, 5)

118 119 120

Tablature for measures 118-120:

Measure 118: T (7, 4, 9, 7, 4), B (6, 0, 0)

Measure 119: T (0, 0, 0, 7, 7, 7, 7, X, X, X), B (0, 0, 0, 0, 0, 0, 0, 0, 0, 0)

Measure 120: T (7, 7, 7), B (5, 5, 5, 5, 5, 5, 5, 5)

121 122

Tablature for measures 121-122:

Measure 121: T (9, 9, 9, 12), B (7, 7, 7, 7, 7, 7, 7, 7)

Measure 122: T (0, 0, 2, 4, 0), B (5, 3, 2, 0, 0)