

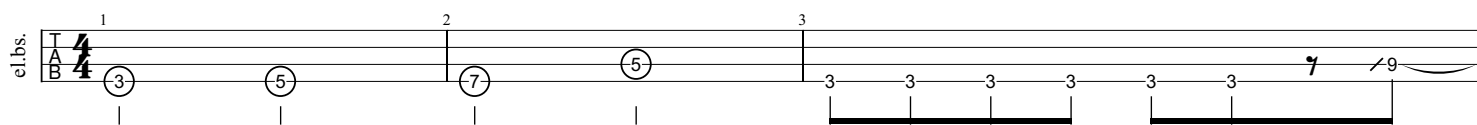
あの夏に咲け

ヨルシカ

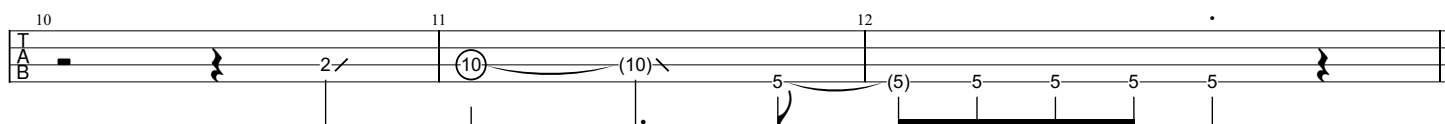
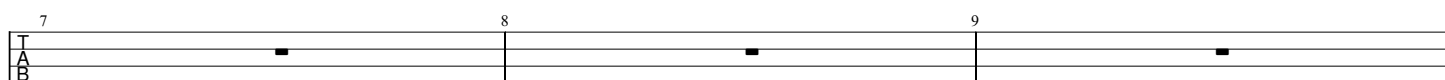
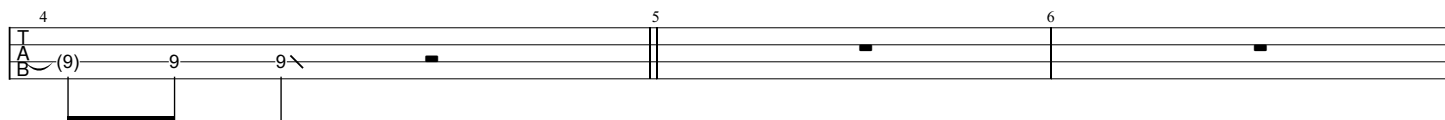
Standard tuning

♩ = 160

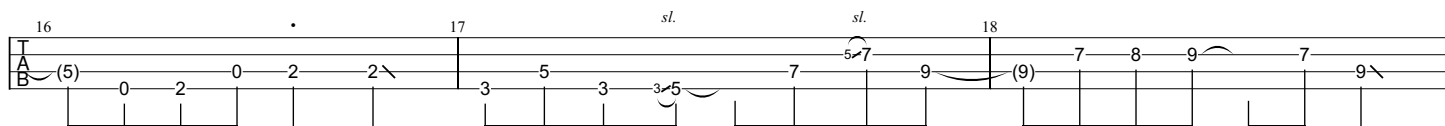
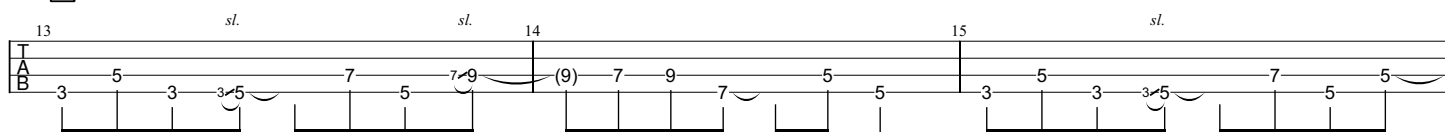
Intro



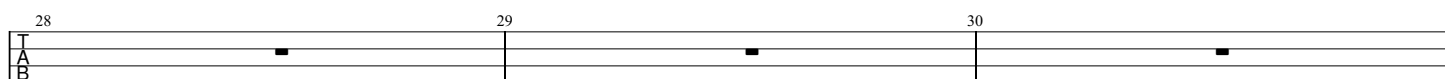
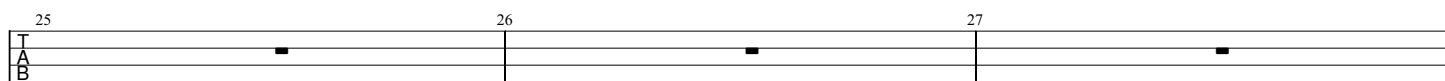
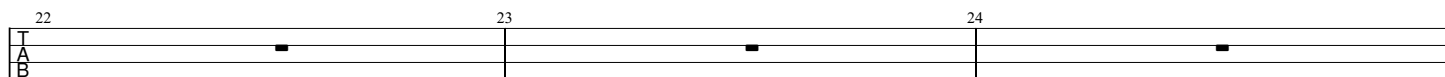
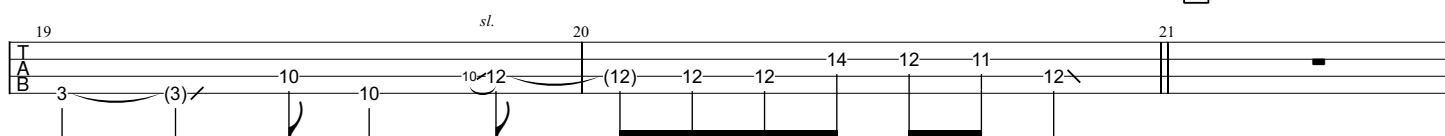
A



B



C



31 32 33

Three measures of TAB notation. Measure 31 has a single note on the 7th fret. Measure 32 has a single note on the 7th fret. Measure 33 has a single note on the 7th fret.

34 35 36

Three measures of TAB notation. Measure 34 has a single note on the 7th fret. Measure 35 has a sequence of notes: 7, 5, 7, 7, 7, 5, with a slur over the last four notes. Measure 36 has a sequence of notes: (5), 5, 5, 5, 5, 4, 5, with a slur over the last three notes.

D

37 38 39

Three measures of TAB notation. Measure 37 has a sequence of notes: 2, 2, 7, 2, 2, 7, 2, with a slur over the last three notes. Measure 38 has a sequence of notes: 3, 3, 7, 3, 3, 7, 3, with a slur over the last three notes. Measure 39 has a sequence of notes: 2, 2, 7, 2, 2, 7, 2, with a slur over the last three notes.

40 41 42

Three measures of TAB notation. Measure 40 has a sequence of notes: 7, 7, 7, 7, 6, 6, 6, 6. Measure 41 has a sequence of notes: 0, 7, 5, 7, 5. Measure 42 has a sequence of notes: 5, 5, 3, 2.

E

43 44 45

Three measures of TAB notation. Measure 43 has a sequence of notes: 3, 3, 7, 3, 3, 7, 3, 9, with a slur over the last two notes. Measure 44 has a sequence of notes: (9), 9, 9, 9, 9, 9, with a slur over the last three notes. Measure 45 has a sequence of notes: 3, 5, 3, 3, 5, 7, 5, 9, with a slur over the last three notes.

46 47 48

Three measures of TAB notation. Measure 46 has a sequence of notes: (9), 7, 9, 7, 5, 5, with a slur over the last two notes. Measure 47 has a sequence of notes: 3, 5, 3, 3, 5, 7, 5, 5, with a slur over the last three notes. Measure 48 has a sequence of notes: (5), 0, 2, 0, 2, 2, with a slur over the last three notes.

49 50 51

Three measures of TAB notation. Measure 49 has a sequence of notes: 3, 5, 3, 3, 5, 7, 9, with a slur over the last two notes. Measure 50 has a sequence of notes: (9), 7, 8, 9, 7, 9, with a slur over the last two notes. Measure 51 has a sequence of notes: 3, (3), 10, 10, 10, 12, with a slur over the last two notes.

52 53 54

Three measures of TAB notation. Measure 52 has a sequence of notes: (12), 12, 12, 14, 12, 11, 12, with a slur over the last two notes. Measure 53 has a sequence of notes: 3, 5, 3, 3, 5, 7, 5, 7, 9, with a slur over the last three notes. Measure 54 has a sequence of notes: (9), 7, 9, 7, 5, 5, with a slur over the last two notes.

55 56 57

Three measures of TAB notation. Measure 55 has a sequence of notes: 3, 5, 3, 3, 5, 7, 5, 5, with a slur over the last two notes. Measure 56 has a sequence of notes: (5), 4, 5, 7, 9, 9, with a slur over the last two notes. Measure 57 has a sequence of notes: 3, 5, 3, 3, 5, 7, 9, with a slur over the last two notes.

58 59 60

Three measures of TAB notation. Measure 58 has a sequence of notes: (9), 7, 8, 9, 7, 9, with a slur over the last two notes. Measure 59 has a sequence of notes: 3, (3), 10, 10, 10, 12, with a slur over the last two notes. Measure 60 has a sequence of notes: (12), 14, 12, 11, 12, 12, 12, with a slur over the last two notes.

F

61 62 63

Three measures of TAB notation. Measure 61 has a sequence of notes: 3, 5, 3, 3, 5, 7, 5, 7, 9, with a slur over the last two notes. Measure 62 has a sequence of notes: (9), 7, 9, 7, 5, 5, with a slur over the last two notes. Measure 63 has a sequence of notes: 3, 5, 3, 3, 5, 7, 5, 5, with a slur over the last two notes.

64 • 65 *sl.* *sl.* 66

Staff 64-66: TAB notation. Staff 64: (5) 0 2 0 2 2 \. Staff 65: 3 5 3 3 5 \. Staff 66: 7 5 7 9 \ (9) 7 8 9 \ 7 9.

G

67 *sl.* 68 69

Staff 67-69: TAB notation. Staff 67: 3 \ (3) \ 10 \ 10 \ 10 \ 12 \. Staff 68: (12) 12 12 14 12 11 \. Staff 69: 12 \.

70 71 72

Staff 70-72: TAB notation. Staff 70: \. Staff 71: \. Staff 72: \.

73 74 75

Staff 73-75: TAB notation. Staff 73: \. Staff 74: \. Staff 75: \.

76 77 78

Staff 76-78: TAB notation. Staff 76: \. Staff 77: 3 \ 3 \ 3 \ 5 \ 5 \ 5 \ 5 \. Staff 78: 2 \ 2 \ 2 \ 2 \ 7 \ 7 \ 7 \ 7 \.

79 80 81

Staff 79-81: TAB notation. Staff 79: 3 \ 3 \ 3 \ 3 \ 5 \ 5 \ 5 \ 5 \. Staff 80: 7 \ 7 \ 7 \ 7 \ 5 \ 5 \. Staff 81: 12 \ 3 \ 3 \ 3 \ 3 \ 5 \ 5 \ 5 \ 5 \.

82 83 84

Staff 82-84: TAB notation. Staff 82: 6 \ 6 \ 6 \ 6 \ 7 \ 7 \ 5 \ 6 \. Staff 83: 7 \ 7 \ 7 \ 0 \ 0 \ 5 \. Staff 84: (5) 5 \ 5 \ 12 \ 12 \ 12 \.

H

85 86 87

Staff 85-87: TAB notation. Staff 85: \. Staff 86: \. Staff 87: 5 \ 5 \ 0 \ 2 \ 2 \ 2 \ 2 \ 2 \.

88 89 90

Staff 88-90: TAB notation. Staff 88: 3 \ 3 \ 3 \ 3 \ 3 \ 2 \ 2 \ 2 \ 2 \. Staff 89: 2 \ 2 \ 2 \ 2 \. Staff 90: 9 \ 7 \ 9 \ 7 \ 8 \ 8 \ 8 \.

91 92 93

Staff 91-93: TAB notation. Staff 91: 0 \ 7 \ 5 \ 7 \. Staff 92: 5 \ 5 \ 3 \ 2 \. Staff 93: 3 \ 3 \ 3 \ 3 \ 3 \ 3 \ 9 \.

E'

94 95 96

Staff 94-96: TAB notation. Staff 94: (9) 9 \ 9 \ 9 \ 9 \. Staff 95: 3 \ 5 \ 3 \ 3 \ 5 \. Staff 96: 7 \ 5 \ 7 \ 9 \ (9) 7 \ 9 \ 7 \ 5 \ 5 \.

97 *sl.* 98 • • 99 *sl.* *sl.*

100 101 *sl.* 102

103 *sl.* *sl.* 104 105 *sl.*

106 • • 107 *sl.* *sl.* 108

I

109 *sl.* 110 111

112 113 114 *sl.*

115 *sl.* 116 117

118 119 120

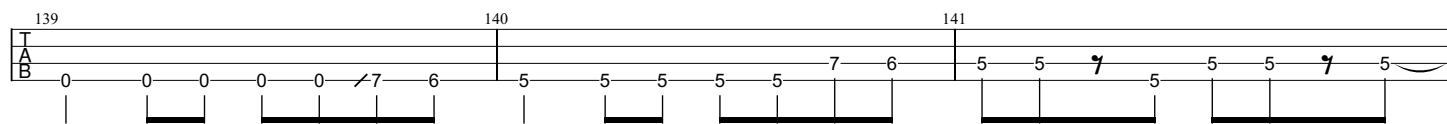
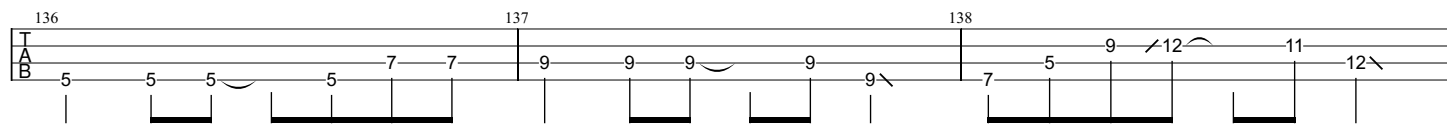
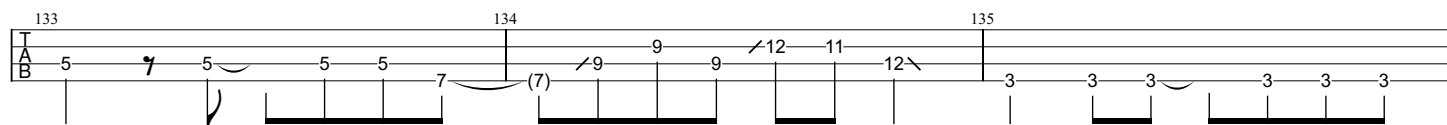
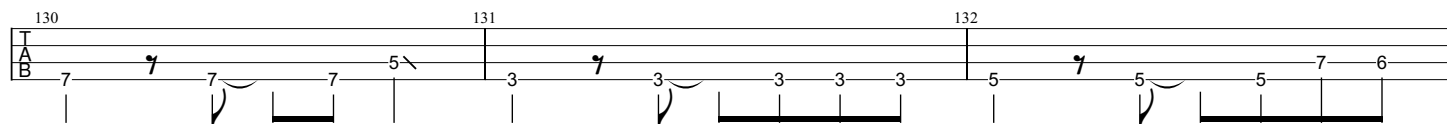
121 122 *sl.* 123

124 125 126

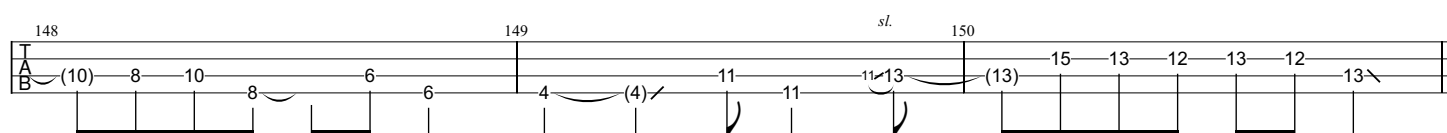
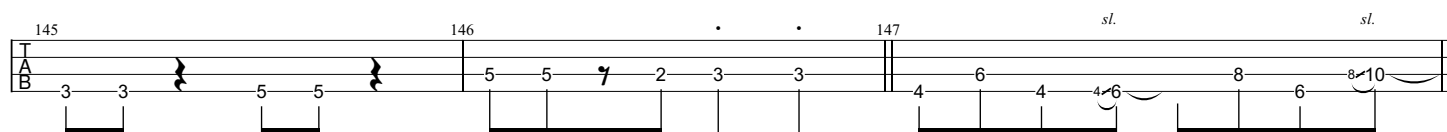
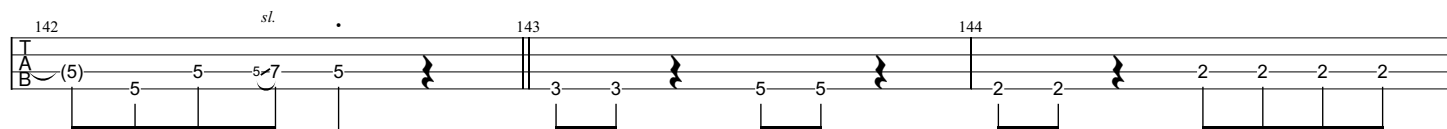
J

127 128 129

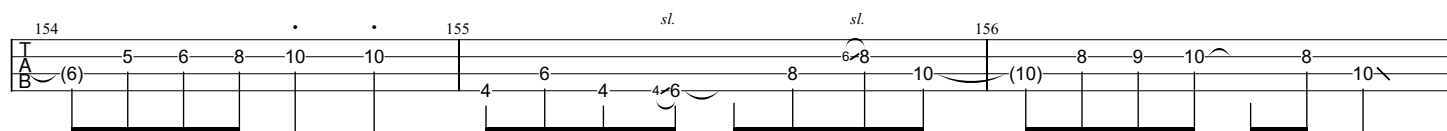
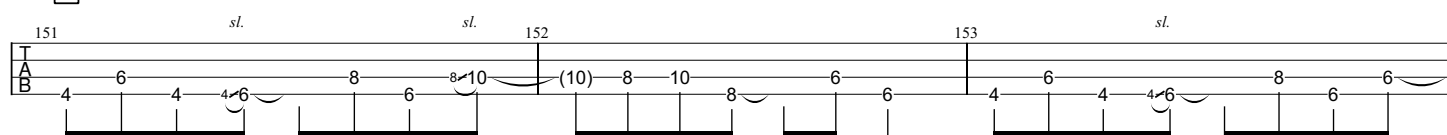
Detailed description of the tablature: The page shows a sequence of guitar parts. Measures 97-102 feature a mix of single notes and triplets, with slides and slurs. Measures 103-108 continue with similar patterns, including some double stops. Measure 109 is a key transition point marked with a Roman numeral 'I'. Measures 110-114 show more complex fretting, including a double bar line in measure 111. Measures 115-117 feature a series of double stops and single notes. Measures 118-120 show a progression of single notes and double stops. Measures 121-123 continue with single notes and double stops. Measures 124-126 show a series of double stops and single notes. Measure 127 is a key transition point marked with a Roman numeral 'J'. Measures 128-129 show a final sequence of single notes and double stops.



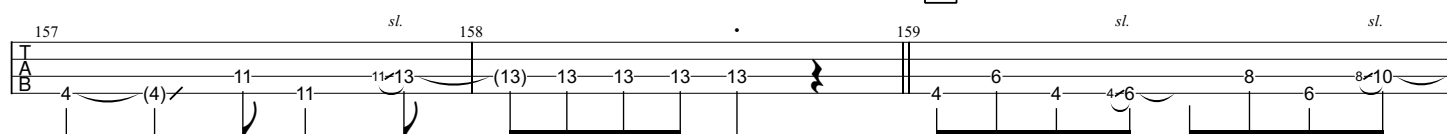
K



L



M



160 161 *sl.* 162

163 *sl.* *sl.* 164 165 *sl.*

166 167 168

169