

《风去云不回》

战狼2 插曲
潇潇指弹改编

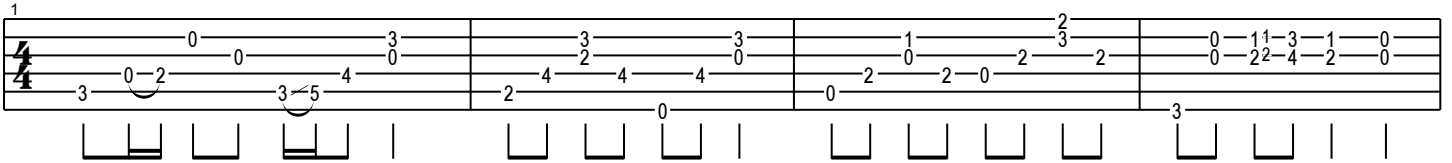
Words by 陈潇潇

Music by 潇潇指弹

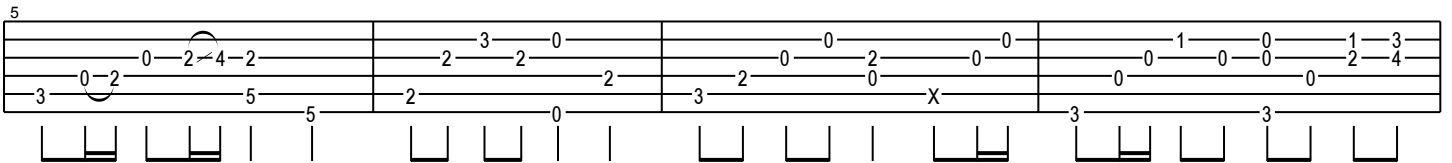
Capo. 2 fret

Moderate ♩ = 65

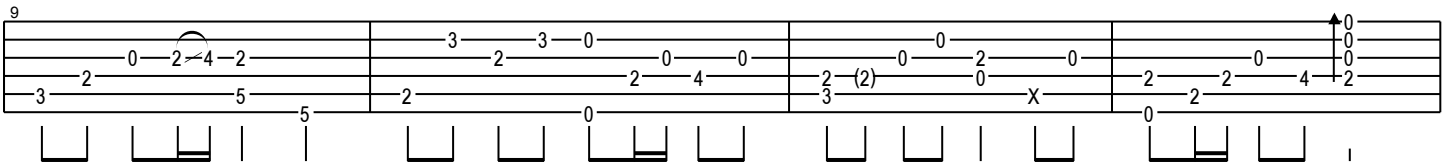
let ring



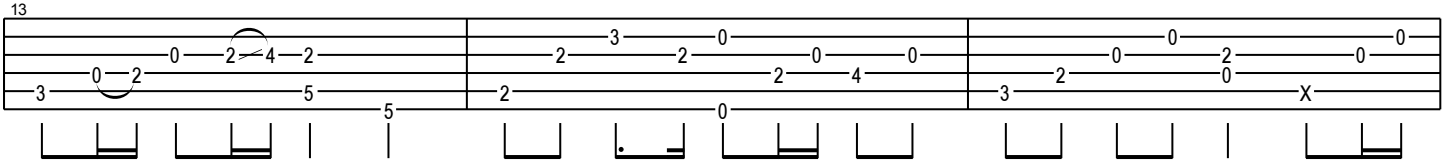
let ring



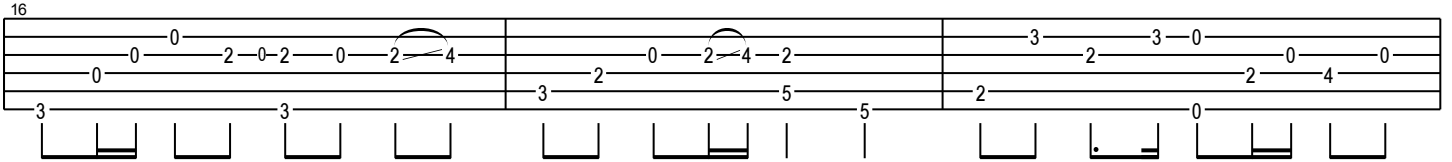
let ring



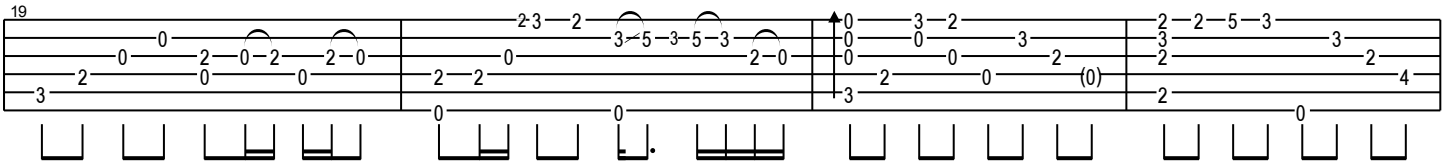
let ring



let ring



let ring



let ring

let ring

The musical score for 'The Rose Tree' is presented in a single system. It features a vocal line (Soprano) and a piano accompaniment. The vocal line begins with a treble clef and a key signature of one flat (B-flat). The piano accompaniment is written for the right hand in a treble clef and the left hand in a bass clef. The score is divided into three measures. The first measure contains the vocal melody and piano accompaniment. The second measure continues the melody and accompaniment. The third measure concludes the piece. The vocal line is written in a soprano range, and the piano accompaniment provides harmonic support. The score is labeled 'The Rose Tree' at the top left.

$$\text{let ring}$$

let ring

35

3

let ring

[illegible]

let ring

41

Example 41

Measures 1-3:

Staff 1 (Melody):

Measure 1: Bb (quarter), A (quarter), G (quarter), F (quarter)

Measure 2: E (quarter), D (quarter), C (quarter), Bb (quarter)

Measure 3: A (quarter), G (quarter), F (quarter), E (quarter)

Staff 2 (Bass):

Measure 1: Bb (quarter), A (quarter), G (quarter), F (quarter)

Measure 2: E (quarter), D (quarter), C (quarter), Bb (quarter)

Measure 3: A (quarter), G (quarter), F (quarter), E (quarter)

let ring

[illegible]

let ring

let ring -----

52

let ring -----

56

let ring -----

59

let ring -----

62

let ring -----

65

let ring -----

68

let ring -----

71

let ring -----

75