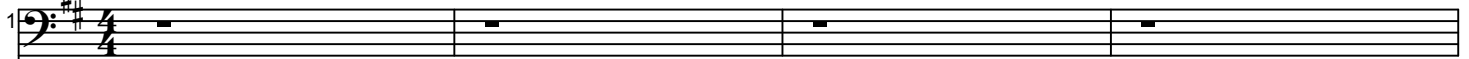


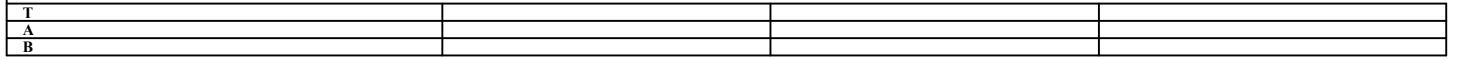
# (Bassline)

## A Intro

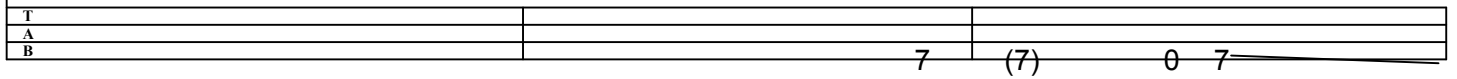
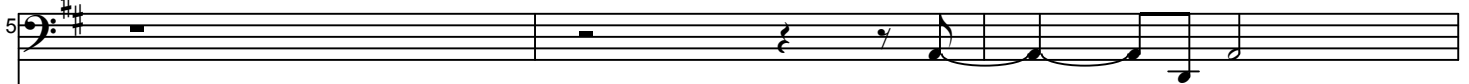
♩ = 70



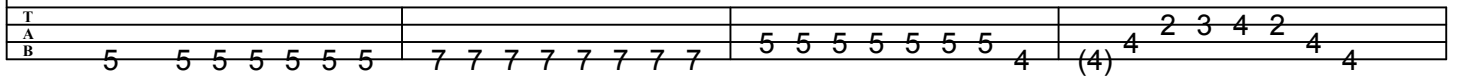
Gtr I      Tuning : Drop-D : D-A-D-G



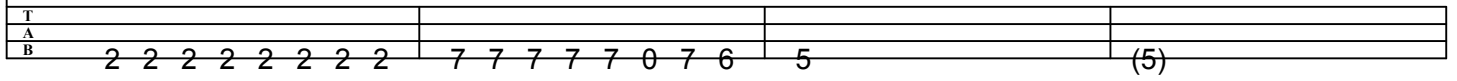
♩ = 183



7 (7) 0 7 *sl.*



5 5 5 5 5 5 5 7 7 7 7 7 7 7 5 5 5 5 5 5 5 4 (4) 4 2 3 4 2 4 4

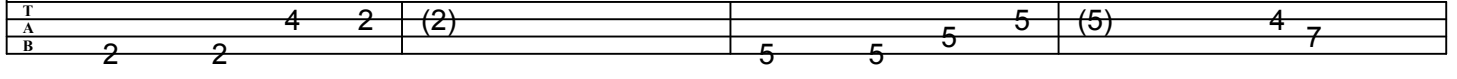


2 2 2 2 2 2 2 2 7 7 7 7 7 0 7 6 5 (5)

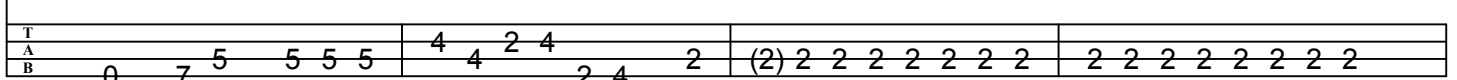
## B Verse



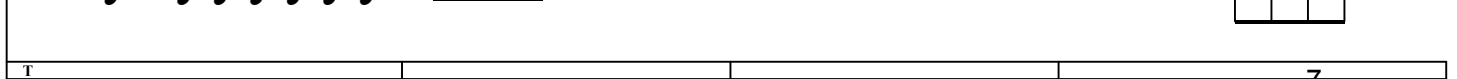
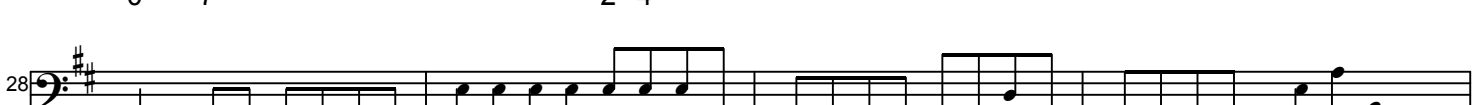
(5) 7 7 9 9 9 7 (7)



2 2 4 2 (2) 5 5 5 5 (5) 4 7



0 7 5 5 5 5 4 4 2 4 2 4 2 (2) 2 2 2 2 2 2 2 2 2 2 2 2 2



2 2 2 2 2 2 2 7 7 7 7 7 7 7 5 (5) 5 5 5 5 5 5 0 (0) 0 0 0 0 7 7 9

## [C] Pre-Chorus

32

T  
A  
B 9 9 9 9 11 12 9 | 9 7 9 7 2 4 || 5 7 5 | 7 7 7

36

T  
A  
B 4 4 4 2 2 2 1 | (1) 1 1 6 6 4 | 5 7 5 5 7 4 | 4 6 4 4 6 2

40

T  
A  
B 10 10 10 10 10 10 10 8 | 6 6 6 6 6 6 6 6 | 4 4 4 4 4 4 4 4 | (4) 4 4 6 4 3 4 6

## [D] Chorus

44

T  
A  
B 1 1 1 | 3 3 3 3 3 | (3) 3 3 3 3 3 6 | (6) 6 8 6 6 8 6 4

48

T  
A  
B 4 4 4 4 4 4 4 | (4) 4 4 4 3 6 4 6 | 5 5 5 5 5 6 | (6) 6 8 8 5 5 8 8

52

T  
A  
B 6 6 6 6 3 6 7 | (7) 7 7 7 7 5 9 | 4 4 4 4 6 6 4 | 6 6 6 6 8 6 8

56

T  
A  
B 3 3 3 5 3 | 3 3 1 3 1 3 3 | 1 1 1 1 3 1 6 | (6) 6 8 6 8 6 8

60

T  
A  
B 3 3 3 3 3 3 3 3 | 8 8 8 8 8 8 8 8 | 4 4 4 4 4 4 4 4 | 6 6 6 6 6 6 6 6

64

T  
A  
B

3 3 3 3 3 3 3 3 1 1 1 1 1 1 1 1 4 4 4 4 4 4 4 4 6 6 6 6 6 6 6 6

68

T  
A  
B

4 4 4 4 4 6 6 3 (3) 3 3 3 3 3 3 4 4 4 4 4 4 4 4 6 6 6 6 6 6 6 6

72

T  
A  
B

3 3 3 3 3 3 3 3 1 3 4 3 1 4 3 1 4 4 4 4 4 3 3 3 3

76

T  
A  
B

1 1 1 1 1 1 1 6 1 (1) 1 1 1 1 3 4 1 (1) 1 1 1 1 3 4 5

80

T  
A  
B

5 5 5 5 8 4 6 (6) 6 6 6 6 2 (2) 2 2 2 2 4 5 2 (2) 2 2 2 2 4 5 6

[E] Verse

84

T  
A  
B

6 6 6 6 9 5 7 (7) 7 7 5 7 7 9 9 9 9

88

T  
A  
B

2 2 2 2 5 5 5 5

92

T  
A  
B

0 0 4 4 4 2 2 4 2 (2) 2 2 2 2 2 2 2 2 2 2 2 2 2

96

T  
A  
B

2 2 2 2 2 2 2 7 7 7 7 7 7 5 (5) 5 5 5 5 5 5 7 (7) 7 7 7 7 7 9

sl.

## [F] Pre-Chorus

100

104

108

T  
A  
B

## [G] Chorus

112

116

120

124

128

T  
A  
B

8

sl.

138

T  
A  
B

8 8 8 8 8 8 8 6 (6) 6 6 6 5 5 8 6 7 7 7 7 2 3 (3) 3 1 1 3 1 3 1

142

T  
A  
B

5 5 5 5 5 5 5 5 | 5 5 5 5 5 5 5 5 | 3 3 3 3 3 3 3 3 | 3 3 3 3 3 3 3 3

**I Chorus**

[illegible][illegible]

154

The image shows a musical score for the song "The Rose Tree". It features a vocal line and a guitar accompaniment. The vocal line is written in G major (one sharp) and 2/4 time. The guitar accompaniment is also in G major (one sharp) and 2/4 time, with a capo on the 2nd fret. The score includes measures 154 through 157. The guitar part includes a key signature of one sharp (F#) and a capo on the 2nd fret. The score is written for a vocal line and a guitar accompaniment. The vocal line is in G major, 2/4 time. The guitar accompaniment is in G major, 2/4 time, with a capo on the 2nd fret. The score includes measures 154 through 157. The guitar part includes a key signature of one sharp (F#) and a capo on the 2nd fret.

T  
A  
B

6 6 6 6 3 6 7 (7) 7 7 7 2 2 2 2 4 4 6 4 6 3 4 6 6 8 6 8 6 8

158

T  
A  
B

3 3 3 5 2 3 1 3 1 3 3 1 1 1 1 2 1 6 (6) 6 6 6 6

162

T  
A  
B

3 3 3 3 3 3 3 3 3 3 *sl.* 8 8 8 8 8 8 8 8 4 4 4 4 4 4 4 4 6 6 6 6 6 6 6 6

166

T  
A  
B

3 3 3 3 3 3 3 3 1 1 1 1 1 1 1 1 4 4 4 4 4 4 4 4 6 6 6 6 6 6 6 6

170

The image shows a musical score for the song "The Rose Tree". It consists of a vocal line and a guitar accompaniment. The vocal line is written in G major (one sharp) and 4/4 time. The guitar accompaniment is written in G major (one sharp) and 4/4 time, with a capo on the 2nd fret. The guitar part includes a key signature of one flat (F major) and a time signature of 4/4. The score is divided into measures, with the first measure starting at measure 170. The guitar part includes a key signature change to one flat (F major) and a time signature change to 4/4. The guitar part includes a key signature change to one flat (F major) and a time signature change to 4/4. The guitar part includes a key signature change to one flat (F major) and a time signature change to 4/4.

T  
A  
B

4 4 4 4 4 4 4 4 3 (3) 3 3 1 3 3 3 3 4 4 4 4 4 4 4 4 6 6 6 6 6 6 6 6

174

Tab: 3 3 3 3 3 3 3 3 8 8 8 8 8 8 6 4 3

T  
A  
B

## J Outro

178

Tab: 1 1 1 1 1 1 1 1 6 6 6 6 6 6 6 4 (4) 4 4 4 4 4 4 4 4 6 6 6 6 6 6 6 6

T  
A  
B

182

Tab: 8 8 8 8 8 8 8 8 6 6 6 8 10 8 6 4 (4) 4 4 4 4 4 4 4 4 6 6 6 6 6 6 6 6

T  
A  
B

186

Tab: 8 8 6 6 8 8 8 8 8 8 8 10 8 6 8 8 5 5 5 5 5 5 5 5 7 7 7 7 7 7 7 7

T  
A  
B

190

Tab: 5 5 5 5 5 5 5 4 (4) 4 2 3 4 2 4 4 2 2 2 2 2 2 2 2 7 7 7 7 7 0 7 6

T  
A  
B

194

Tab: 5 (5) (5) (5) 7 7

T  
A  
B

198

Tab: (Empty)

T  
A  
B