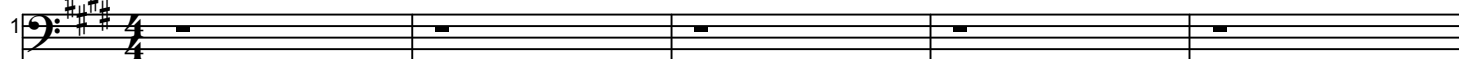


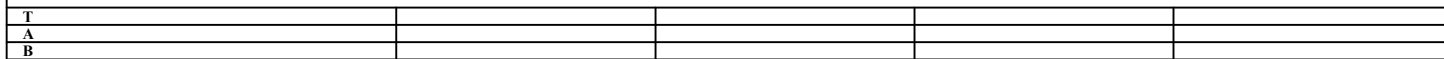
(Bassline)

A Intro

♩ = 144



Gtr I Tuning : Half Step Down



Bass staff 3: Intro, measures 11-15, 4/4 time, key of D major.

Bass staff 4: Intro, measures 16-20, 4/4 time, key of D major.

Bass staff 5: Intro, measures 21-25, 4/4 time, key of D major.

B Verse

Bass staff 6: Verse, measures 26-30, 4/4 time, key of D major.

Bass staff 7: Verse, measures 31-35, 4/4 time, key of D major.

C Pre-Chorus

Bass staff 8: Pre-Chorus, measures 36-40, 4/4 time, key of D major.

Bass staff 9: Pre-Chorus, measures 41-45, 4/4 time, key of D major.

34

T
A
B

2 4 2 4 1 2 4 1 2

sl.

D Chorus

36

T
A
B

7 7 7 7 4 4 4 4 5 5 5 5 2 2 2 2 4 4 4 4 4 4 2 2 5 5 5 5 5 5 4 4

40

T
A
B

2 2 2 2 2 2 4 2 5 5 5 5 5 5 5 5 4 4 4 4 4 4 4 4 5 5 7 5 7 9 6 7

44

T
A
B

7 7 7 7 4 4 4 4 5 5 5 5 2 2 2 2 4 4 4 4 4 4 4 4 3 3 3 3 3 3 3 3

48

T
A
B

2 2 2 2 2 2 2 2 9 9 9 9 9 9 4 4 5 5 5 5 5 5 5 4 4 4 4 7 7 4 7 4

sl.

52

T
A
B

5 5 5 5 5 4 5 4 4 4 4 6 7 7 7 7 5 5 5 5 5 5 5 5 7 7 7 7 7 7 7 7

56

T
A
B

8 8 8 8 8 8 8 8 7 7 7 7 7 7 7 14

sl. *sl.*

58

T
A
B

7 7 7 7 7 7 7 5 5 5 5 5 5 5 5 5 7 7 7 7 7 7 7 5 5 5 5 5 5 5 5

62

T
A
B

7 7 7 7 7 7 7 5 5 5 5 5 5 5 5 5 7 7 7 7 7 7 7 5 8 8 10 10

E Verse

66

70

sl. *sl.*

F Pre-Chorus

74

78

82

sl.

G Chorus

84

88

92

96

96

T
A
B

2 2 2 2 2 2 2 2 | 9 9 9 9 9 9 4 4 | 5 5 5 5 5 5 5 4 | 4 4 4 4 7 6 7 4

100

100

T
A
B

5 5 5 5 5 5 5 4 | 4 4 4 7 4 6 7 7 | 5 5 5 5 5 5 5 5 | 7 7 7 7 7 7 7 7

104

104

T
A
B

8 8 8 8 8 8 8 8 | 7 7 7 7 7 7 7 7

H Interlude

106

106

T
A
B

7 | 4 13 11 9 11 | 0 | 3 3 3 3 3 3 3 3

110

110

T
A
B

7 7 7 7 7 7 7 7 | 4 4 4 4 4 4 4 4 | 0 0 0 0 0 0 0 0 | 3 3 3 3 3 3 3 3

114

114

T
A
B

2 2 2 2 2 2 2 2 | 5 5 5 5 5 5 5 5 | 4 4 4 4 4 4 4 4 | 4 4 4 4

118

118

T
A
B

0 0 0 0 0 0 0 0 | 2 2 2 2 2 2 2 2 | 2 2 2 2 2 2 2 2

I Pre-Chorus

121

121

T
A
B

4 4 4 4 4 3 | 2 4 4 4 4 4 | 2 2 2 2 4 6 | 7 7 7 6 7 6 6

125

125

T
A
B

4 4 6 7 6 5 | 4 4 2 2 2 4 2 | 2 2 2 2 2 2 | 2 4 4 2 2 2 2

129

T
A
B

4 2 4 1 2 4 1 2 3

sl. *sl.*

J Chorus

133

T
A
B

3 4 0 1 1 1 1 1 1 13

sl. *sl.*

137

T
A
B

3 3 3 3 3 5 5 6 6 6 6 6 6 6 5 5 5 5 5 5 5 5 6 5 8 8 10 10 7 8

141

T
A
B

8 8 8 8 0 0 0 0 1 1 1 1 3 3 3 3 5 5 5 5 5 5 5 5 4 4 4 4 4 4 4 4

145

T
A
B

3 3 3 3 3 3 3 3 10 10 10 10 10 10 5 5 6 6 6 6 6 6 6 5 5 5 5 5 5 8 7 7

sl.

149

T
A
B

6 6 6 6 6 6 6 5 5 5 7 8 7 7 7 6 6 6 6 6 6 6 6 8 8 8 8 8 8 8 8

153

T
A
B

9 9 9 9 9 9 9 8 8 8 8 8 8 15

sl. *sl.*

K Outro

155

T
A
B

8 8 8 8 8 8 8 6 6 6 6 6 6 6 6 8 8 8 8 8 8 8 6 6 6 6 6 6 6 6

The image displays a musical score for the song "The Rose Tree". It consists of two systems of music, each featuring a vocal line and a guitar accompaniment line.

System 1 (Measures 159-162):

- Vocal Line:** Written in bass clef with a key signature of one sharp (F#). The melody consists of eighth and quarter notes, ending with a quarter rest.
- Guitar Line:** Features a treble clef and a key signature of one sharp. The fret numbers are: 8 8 8 8 8 | 8 8 6 | 6 6 6 6 6 6 6 6 | 8 8 8 8 8 | 8 8 6 | 9 9 | 11 11.

System 2 (Measures 163-164):

- Vocal Line:** Continues in bass clef with a key signature of one sharp. It shows a few notes followed by a full measure rest, ending with a double bar line.
- Guitar Line:** Features a treble clef and a key signature of one sharp. The fret numbers are: 13 | 1 1. A slur (*sl.*) is placed under the first measure.