

Flower Dance

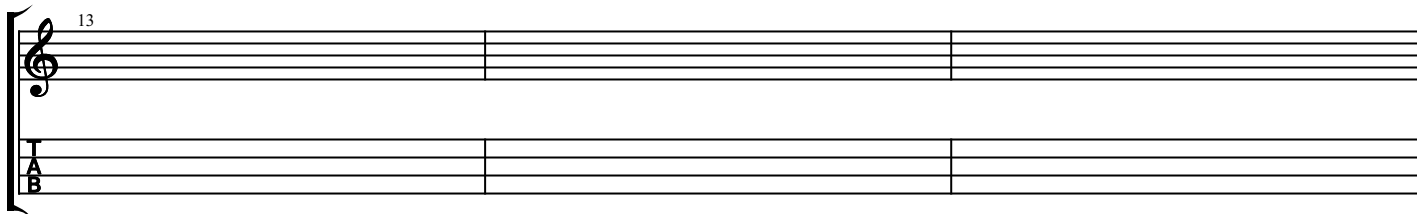
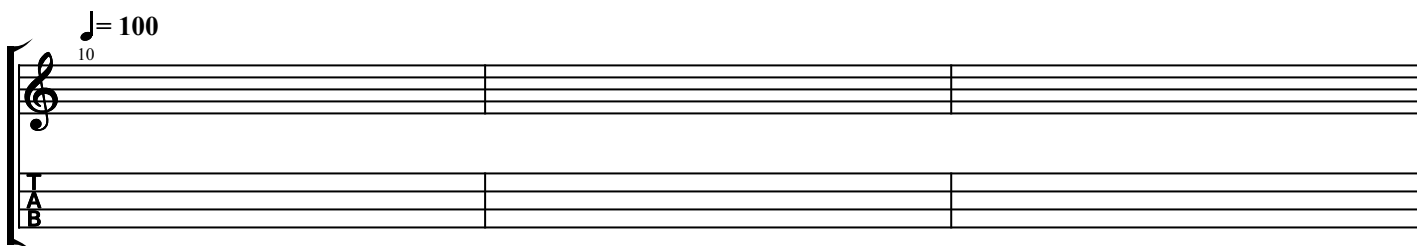
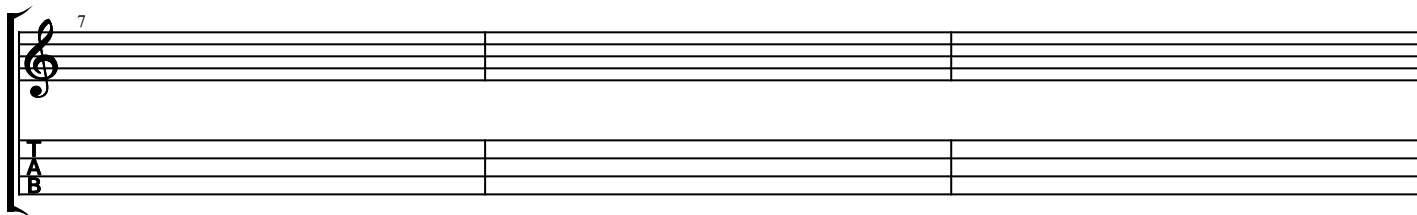
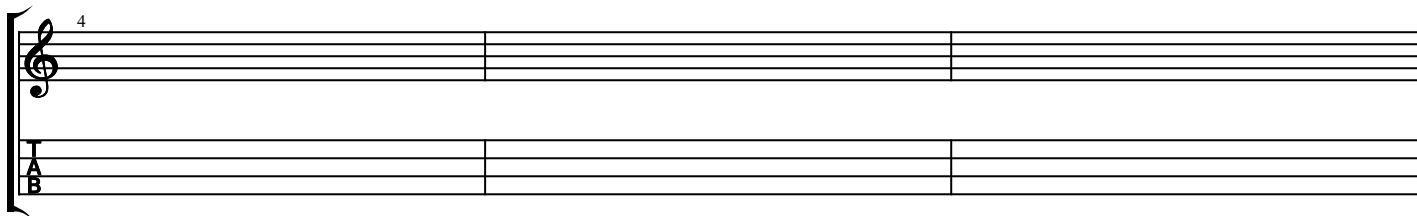
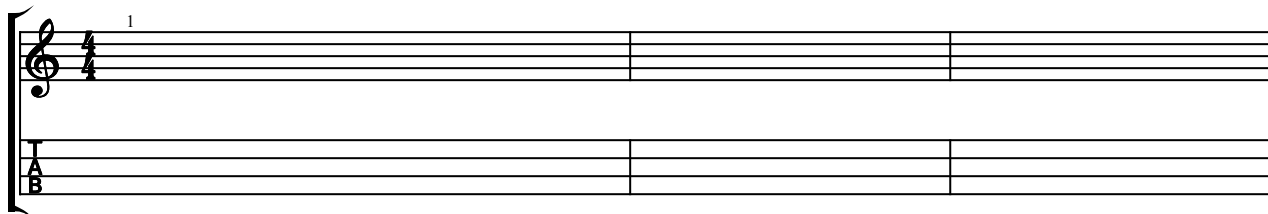
Dj Okawari

Standard tuning

①=E ③=D
②=A ④=G

♩ = 80

Violin



19

System 19: Treble and Bass clefs, empty staves.

22

System 22: Treble and Bass clefs, empty staves.

25

System 25: Treble and Bass clefs, empty staves.

28

System 28: Treble and Bass clefs, empty staves.

31

System 31: Treble and Bass clefs, empty staves.

34

System 34: Treble and Bass clefs, empty staves.

37

System 37: Treble and Bass clefs, empty staves.

40

System 40: Treble and Bass clefs with musical notation. The Treble staff shows a half note G4 and a quarter note A#4. The Bass staff shows a half note G2 and a quarter note A2. The Treble staff has a fermata over the G4 and a diamond-shaped breath mark under the A#4. The Bass staff has a fermata over the G2 and a diamond-shaped breath mark under the A2.

43

46

49

52

A 渐大

55

58

pp

61

pp

< < < < < < < <

1 1 2 2 3 3 2 2

64

ff

4 6 11 6 9 13

67

7 1 4 6 1 4 4 6 11 6 9 13 7 1 4 6 11

70

4 6 11 6 9 13 7 1 4 6 1 4 4 6 11 6 9 13

73

7 1 4 6 13 4 6 11 6 9 13 7 1 4 6 1 4

76

4 6 11 6 9 13 7 1 4 6 13 7-13 11 9

79

8 9 8 6 13 8 9 8 6 8 3 6 6 8 6 8

82

ff

< < < < < >

4 9 8 6 8 4

85

< < < < > < < < < < < < <

8 6 13 7 6 5 8 6 9 8 6

88

< < < < < < < < > <

6 13 6 8 10 13 8 7 13

91

< < < < < < < < < < <

4 9 8 6 6 8 9 13 13 2 6

94

< < < < < < < < < < < <

2 6 2 13 4 9 8 6 4 12 11 9

97

$\text{♩} = 100$ $\text{♩} = 95$

< < < < > <

13 11 16 11 9 13

The image shows a musical score for guitar, consisting of two staves: a treble staff and a bass staff. The treble staff is marked with a treble clef and a tempo of 95. The bass staff is marked with a bass clef and a tempo of 90. The score is divided into three measures by vertical bar lines. The first measure contains a single eighth note on the treble staff, while the second and third measures are empty.

The image shows the musical notation for the song 'The Rose Tree'. It consists of two staves. The top staff is a treble clef with a key signature of one flat (B-flat) and a tempo marking of '♩ = 85'. The bottom staff is a bass clef with a key signature of one flat (B-flat) and a tempo marking of '♩ = 78'. The music is written in 3/4 time. The melody is simple and consists of a few notes. The lyrics 'The Rose Tree' are written below the bottom staff.

106

