

Triangle Wave

Memories Off 6 (op)

fhs第六次制谱
2010年12月2日完成

版权: 5bp
作曲: 志仓千代丸
原唱: 村田あゆみ (村田步)
谱: 小小书呆子

Piano

$\text{♩} = 150$

The piano score is written for a grand piano in 4/4 time with a key signature of four sharps (F#, C#, G#, D#). The tempo is marked as quarter note = 150. The score is divided into five systems, each containing two staves (treble and bass clef). The first system starts with a treble clef staff containing a whole rest followed by a quarter note G5, and a bass clef staff containing a whole rest followed by a quarter note D4. The subsequent systems continue the melody and accompaniment, with the final system ending with a double bar line and a key signature change to three sharps (F#, C#, G#).

13

Measures 13 and 14 of a musical score in A major (three sharps). The right hand features a complex, rhythmic melody with many eighth and sixteenth notes, while the left hand plays a steady eighth-note accompaniment.

15

Measures 15 and 16. The right hand continues its intricate melody, and the left hand maintains the eighth-note accompaniment, with a slight change in the bass line in measure 16.

17

Measures 17, 18, and 19. The right hand's melody is highly active, and the left hand's accompaniment remains consistent with the previous measures.

20

Measures 20, 21, and 22. The right hand has a brief rest in measure 20 before resuming its melody. The left hand has a whole rest in measure 20 and then provides a simple harmonic support.

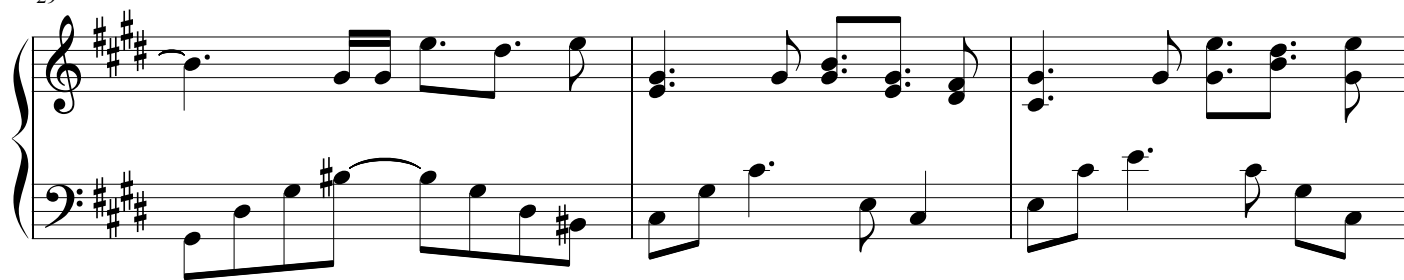
23

Measures 23, 24, and 25. The right hand's melody becomes more melodic and less complex. The left hand continues with a simple accompaniment.

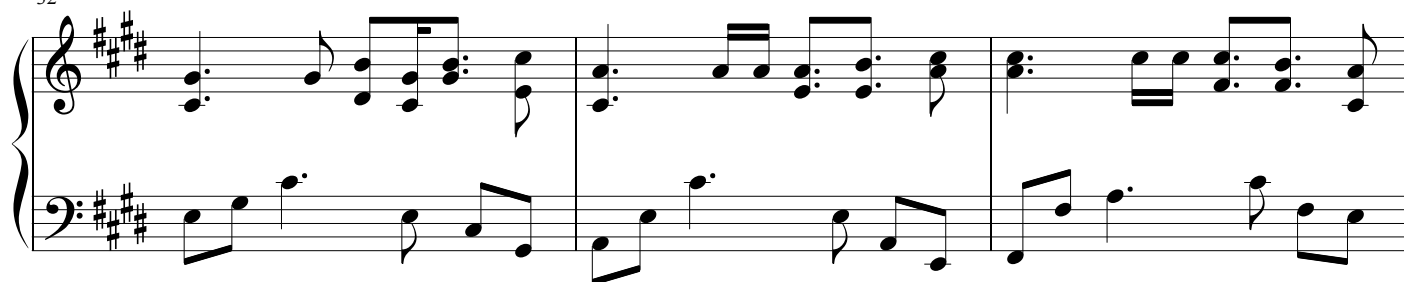
26

Measures 26, 27, and 28. The right hand's melody continues, and the left hand's accompaniment becomes more active in measure 28, featuring some sixteenth-note patterns.

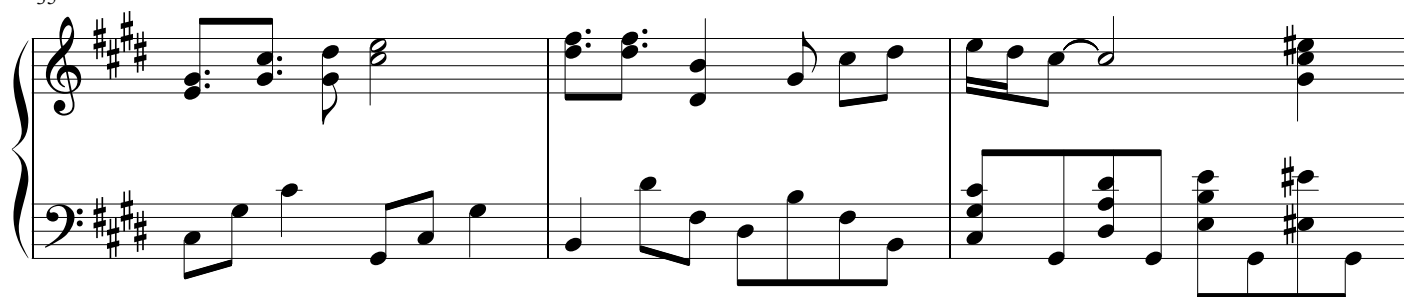
29



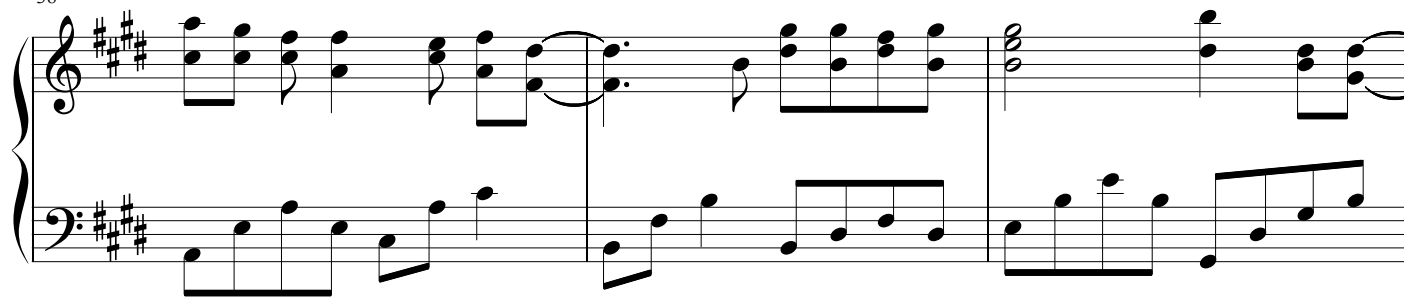
32



35



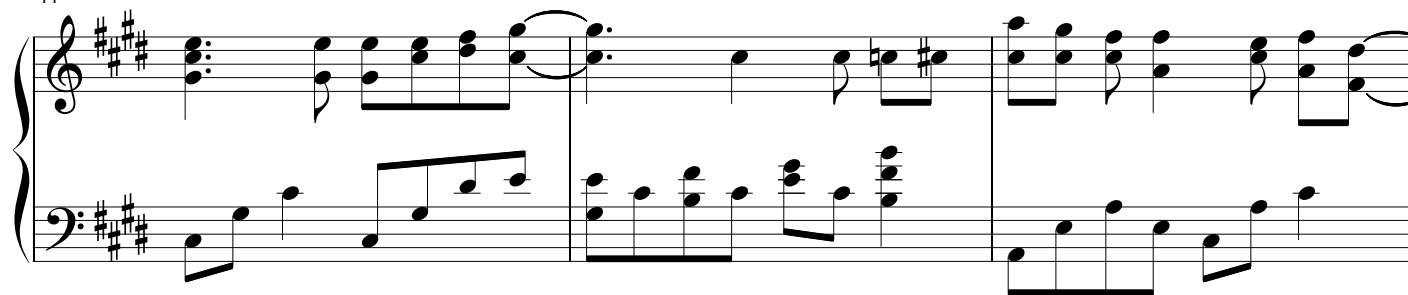
38



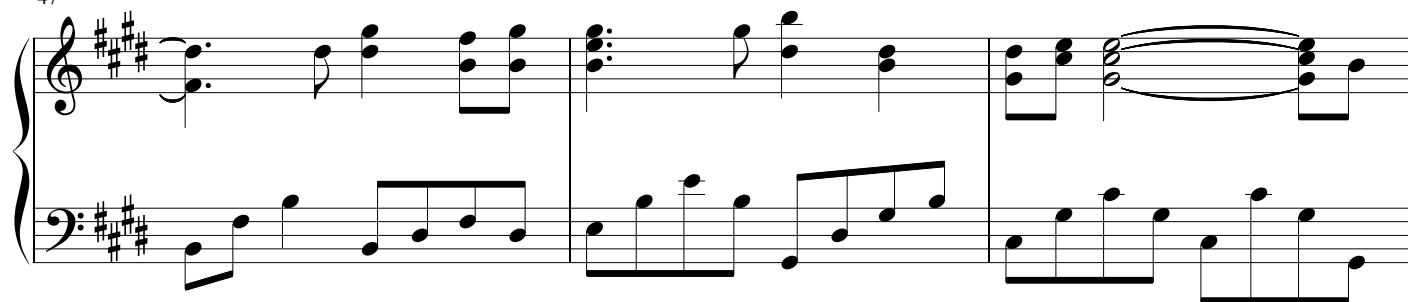
41



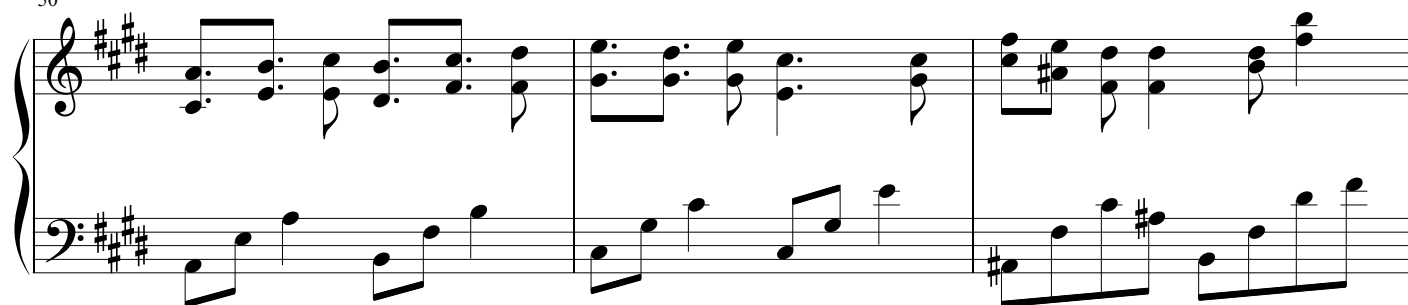
44



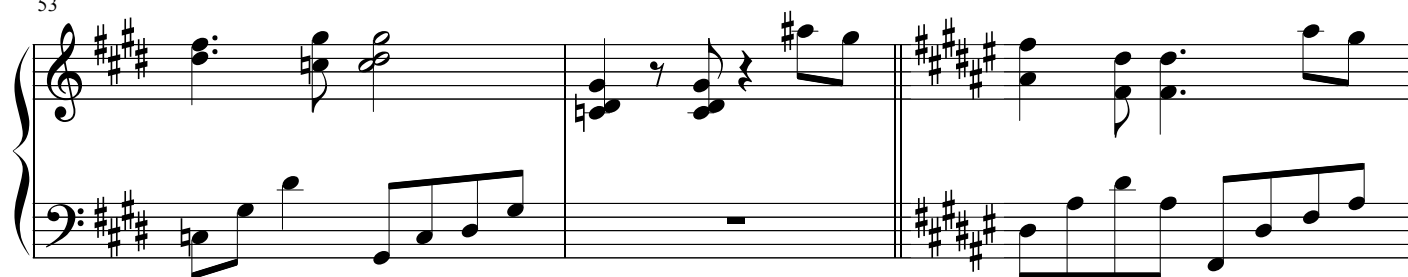
47



50



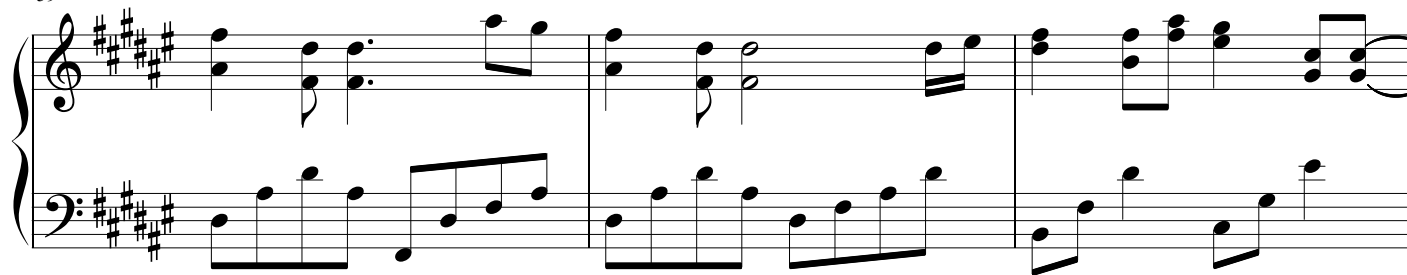
53



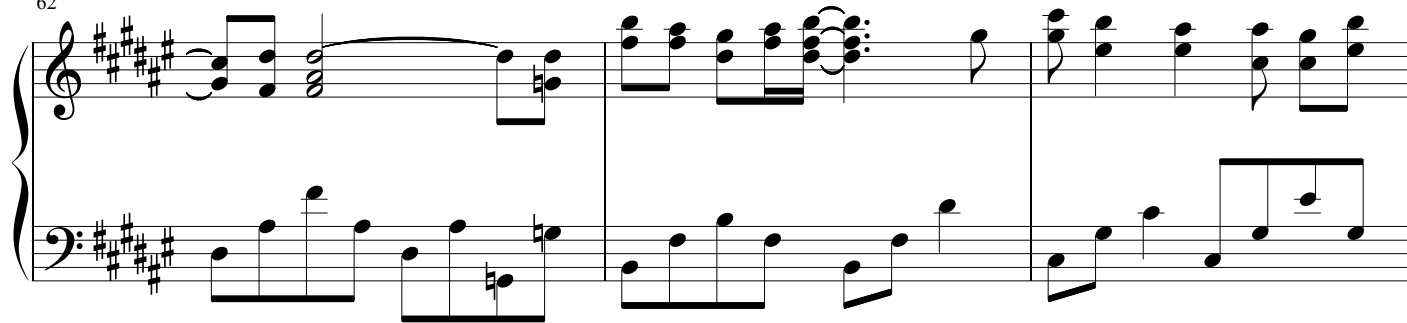
56



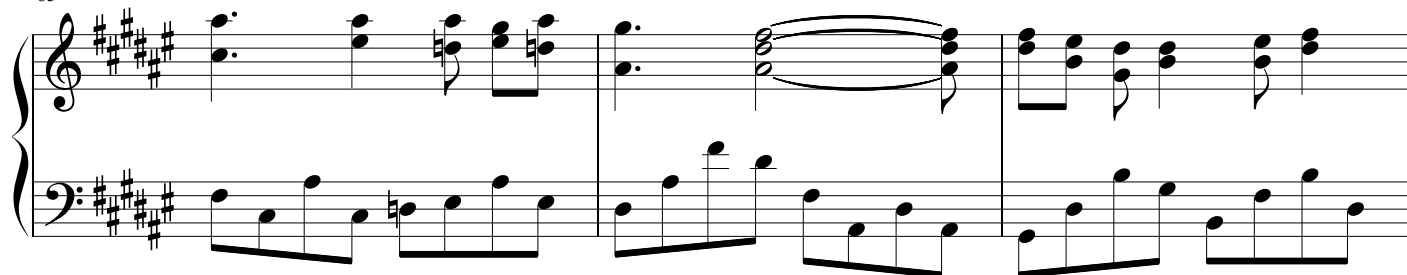
59



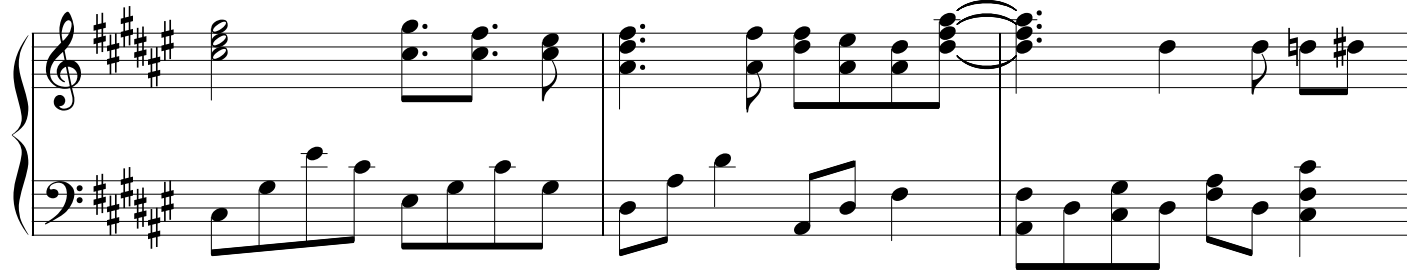
62



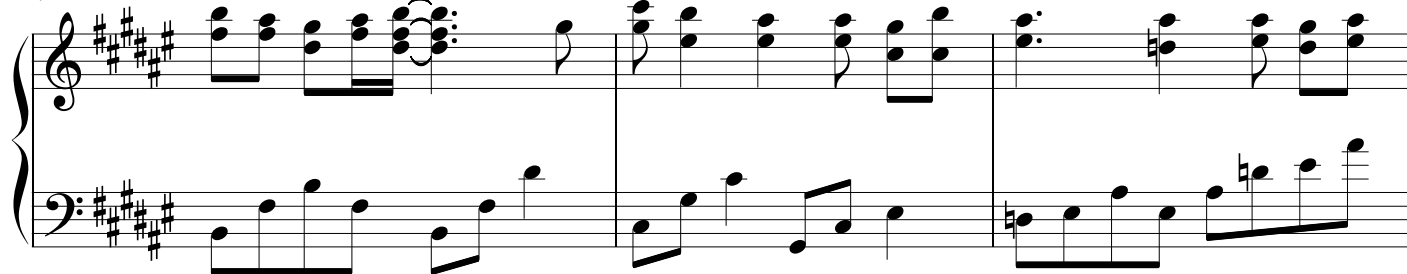
65



68



71



74

Measures 74-76 of a musical score in E major (four sharps). The right hand features a series of chords and eighth notes, while the left hand plays a steady eighth-note bass line. Measure 76 ends with a fermata on a chord in the right hand.

77

Measures 77-78. Measure 77 begins with a half-note chord in the right hand and a half-note in the left hand. Measure 78 features a rapid eighth-note melody in the right hand and a steady eighth-note bass line in the left hand.

79

Measures 79-80. Both measures feature a continuous eighth-note melody in the right hand and a steady eighth-note bass line in the left hand.

81

Measures 81-82. Measure 81 has a half-note melody in the right hand and a half-note bass line. Measure 82 continues with an eighth-note melody in the right hand and a steady eighth-note bass line.

83

Measures 83-84. Both measures feature a continuous eighth-note melody in the right hand and a steady eighth-note bass line in the left hand.

85

Measure 85. The right hand has a whole note on a high G, and the left hand has a whole note chord. The system concludes with a double bar line.